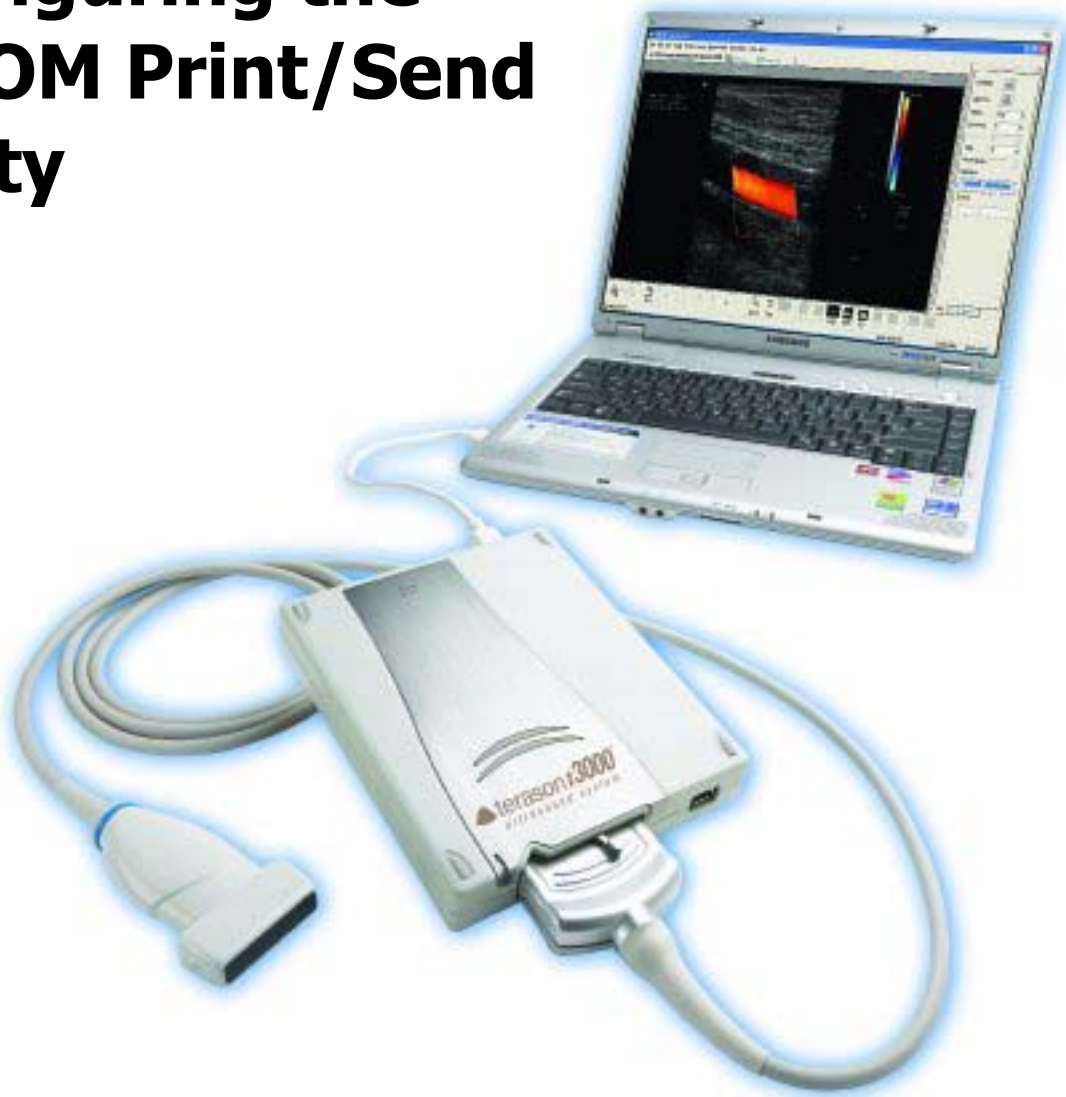


Installing and Configuring the DICOM Print/Send Utility



DICOM Print/Send Installation Guide

Copyright © 2002-2007 by Terason, a division of Teratech Corporation. All rights reserved.

Information in this document is subject to change without notice and should not be construed as a commitment by Terason.

Terason is a registered trademark, and t3000 is a trademark of Teratech Corporation. Other trade names, trademarks, or registered trademarks are property of their respective holders.

Reproduction, adaptation, or translation without prior written permission is prohibited, except as allowed under copyright laws.


Printed in the United States of America.

October 2007


Part number 16-3026-2

Terason, a Division of Teratech Corporation
77 Terrace Hall Avenue
Burlington, MA 01803
U.S.A.

Installing the DICOM Print/Send Utility

The Terason DICOM Send/Print Utility is typically installed at Terason on new systems. The utility is already installed if this icon  displays in the Windows taskbar tray.

Before installing the Terason DICOM Send/Print Utility, make sure the Terason Ultrasound program is installed.

1. Close the **Terason** Ultrasound program.
2. In the Install Disk folder on the installation disk, double-click **Setup.exe** .

The DICOM Send/Print Utility installs.


3. When the setup program is complete, open **C:\Programs > Teratech > Terason 3000**.
4. Install the Dongle Driver by double-clicking **Instdrv.exe** in the Dongle Driver folder on the installation disk.
5. Insert the **dongle** into one of the computer's USB ports.

Windows automatically recognizes the dongle.

6. Double-click **Terason.exe**  to start the program.

After the DICOM Send/Print utility has been started once, it restarts automatically whenever the computer is booted.

Startup

The DICOM Send/Print utility is active immediately when the computer is booted, and is displayed as an icon  in the Windows taskbar. If the utility has not been run previously and does not start automatically, it can be started from the Start menu on the Windows taskbar by opening Programs > TerasonDICOM > Terason.

Before sending or printing DICOM images the first time, the utility must be configured for the destination DICOM server or DICOM printer.

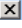
Configuring the DICOM Print/Send Utility

Open the DICOM Print/Send Utility configuration dialog by double-clicking the icon in the taskbar. The DICOM Configuration window opens.

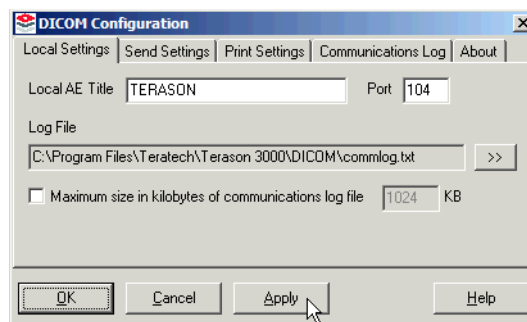


DICOM Configuration Window

The DICOM Configuration window has five tabs: Local Settings, Send Settings, Print Settings, Communications Log, and About.

Click Apply to apply any changes. Click OK to apply changes and close the dialog. Click Cancel to discard changes and close the dialog. Click the  button in the title bar to exit the DICOM Print/Send Utility entirely. Exiting the utility deletes the icon from the taskbar and disables sending and printing of DICOM files. The utility can be restarted by restarting the computer or by selecting Programs > TerasonDICOM > Terason from the Windows Start menu.

Local Settings



DICOM Configuration (Local Settings) Window

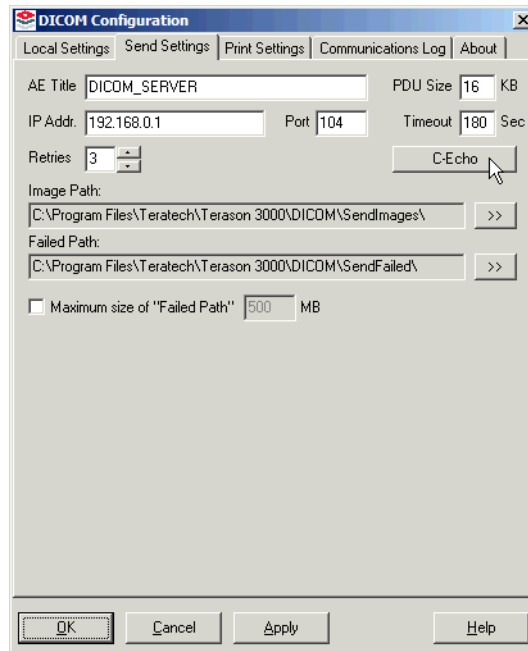
Local Settings refer to the Terason system.

The Local AE Title and Port number are displayed in fields. The default values are TERASON and 104, respectively.

The path and file name of the communication log file is shown below Log File. The default location and name are shown. These values can be changed by clicking the >> buttons to their right.

The maximum size for the communications log file can also be selected. When the maximum size is reached, the oldest entries are removed to make space for new ones.

Send Settings



DICOM Configuration (Send Settings) Window

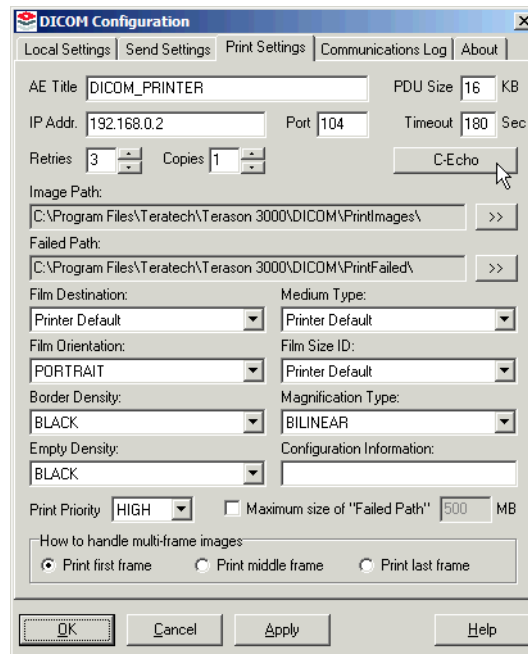
The AE Title, IP address (or DNS node name), and Port number values of the destination DICOM server are displayed in fields. These values should be set to the correct values for the site's DICOM server. Click C-Echo to test whether the server is connected.

The PDU Size, Timeout, and Retries values can be changed, if required by the DICOM server.

Image Path: is the directory that the Terason ultrasound program uses to temporarily store DICOM files when the Send DICOM Images function is selected. The DICOM Print/Send utility deletes the temporary files after they have been successfully sent to the server.

Failed Path: is the directory where DICOM files are moved if they are not sent successfully after the indicated number of retries. The maximum size of the Failed Path directory can be configured. When the maximum size is reached, the oldest entries are removed to make space for new ones.

Print Settings



DICOM Configuration (Print Settings) Window

The AE Title, IP address (or DNS node name), and Port number of the destination DICOM printer are displayed in fields. These values should be changed to the correct values for the site's DICOM printer. Click C-Echo to test whether the printer is connected.

The PDU Size, Timeout, and Retries values can be changed, if required by your DICOM server.

The number of copies to print can also be selected.

Image Path: is the directory that the Terason ultrasound program uses to temporarily store DICOM files when the DICOM Print function is selected. The DICOM Print/Send utility deletes them after they have been successfully sent to the printer.

Failed Path: is the directory where DICOM files are moved if they are not sent successfully after the indicated number of retries. The maximum size of the Failed Path directory can be configured. When the maximum size is reached, the oldest entries are removed to make space for new ones.

Defaults for Film Destination, Medium Type, Film Orientation, Film Size ID, Border Density, Empty Density, Magnification Type, Configuration Information, and Print Priority values are shown above. These can be changed any configuration supported by the DICOM printer that you are using.

How to handle multi-frame images is not applicable, because the Terason system does not send multi-frame images for DICOM print.

Communications Log

Date	Time	Filename	Destination	Status
9/19/2002	11:03...	Img0209181507...	DICOM_PRIN...	Failed
9/19/2002	11:03...	Img0209181507...	DICOM_PRIN...	Failed
9/19/2002	11:03...	Img0209181507...	DICOM_PRIN...	Failed
9/19/2002	11:03...	Img0209181507...	DICOM_PRIN...	Failed
9/19/2002	11:04...	Img0209181507...	DICOM_PRIN...	Failed
9/19/2002	11:04...	Img0209181507...	DICOM_PRIN...	Failed
9/19/2002	11:04...	Img0209181507...	DICOM_PRIN...	Failed
9/19/2002	11:04...	Img0209181507...	DICOM_PRIN...	Failed
9/19/2002	11:04...	Img0209181508...	DICOM_PRIN...	Failed
9/19/2002	11:04...	Img0209181540...	DICOM_PRIN...	Failed
9/19/2002	11:04...	Img0209181541...	DICOM_PRIN...	Failed
9/19/2002	11:04...	Img0209181544...	DICOM_PRIN...	Failed
9/19/2002	11:04...	Img0209181713...	UniServerDE...	Succ...
9/19/2002	11:04...	Img0209181714...	UniServerDE...	Succ...
9/19/2002	11:04...	Img0209190831...	UniServerDE...	Succ...
9/19/2002	11:05...	Img0209190831...	UniServerDE...	Succ...
9/19/2002	11:05...	Img0209191103...	UniServerDE...	Succ...
9/19/2002	11:06...	Img0209191106...	UniServerDE...	Succ...
9/19/2002	11:07...	Img0209191107...	UniServerDE...	Succ...
9/19/2002	11:12...	Img0209191112...	UniServerDE...	Succ...
9/19/2002	11:16...	Img0209191116...	UniServerDE...	Succ...
9/19/2002	11:17...	Img0209191116...	DICOM_PRIN...	Failed
9/19/2002	2:37:4...	Img0209191437...	UniServerDE...	Succ...
9/19/2002	2:37:5...	Img0209191437...	DICOM_PRIN...	Failed
9/19/2002	2:38:1	Img0209191438	UniServerDE...	Succ...

DICOM Configuration (Communications Log) Window

The Communications Log summary is shown above. The Date, Time, Filename, Destination (AE Title), and Status of each DICOM file sent to a server or printer is displayed in a scrollable list.